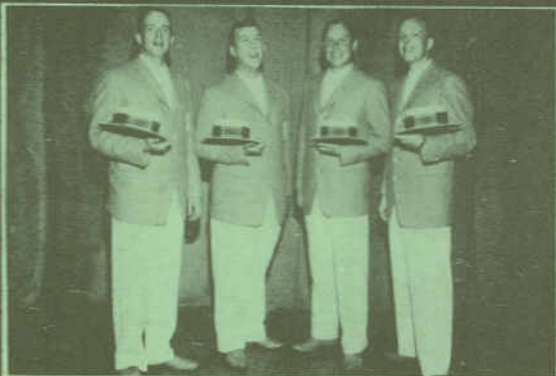


MICHIGAN SINGS



THE SHARPKEEPERS

Bob Craig Bill Rowell Gordon Limberg Al Rehkop

troubadour



NOVEMBER 1962

# TAG

DEAR OLD GAL,  
WHO'S YOUR  
PAL TONIGHT?

As arranged by Renee Craig and sung by  
The Sharpkeepers

# DEAR OLD GAL, WHO'S YOUR PAL TONIGHT?

The image shows a musical score for the song "Dear Old Gal, Who's Your Pal Tonight?". It consists of two systems of music, each with a vocal line and a piano accompaniment line. The key signature is one flat (B-flat major or D minor), and the time signature is 3/4. The first system covers the first eight measures of the song, with lyrics: "DEAR OLD GAL WHO'S YOUR PAL TO NIGHT (TO NIGHT) DEAR OLD". The second system covers the next four measures, with lyrics: "GAL WHO'S YOUR PAL TO NIGHT ?". The piano accompaniment features a simple harmonic structure with chords and moving lines in both hands. The vocal line is written in a simple, accessible style with clear lyrics.

DEAR OLD GAL WHO'S YOUR PAL TO NIGHT (TO NIGHT) DEAR OLD

GAL WHO'S YOUR PAL TO NIGHT ?